

JOHN DEERE 9R SERIES (2015+)

TRACTOR STALK STOMPER

PARTS LISTING

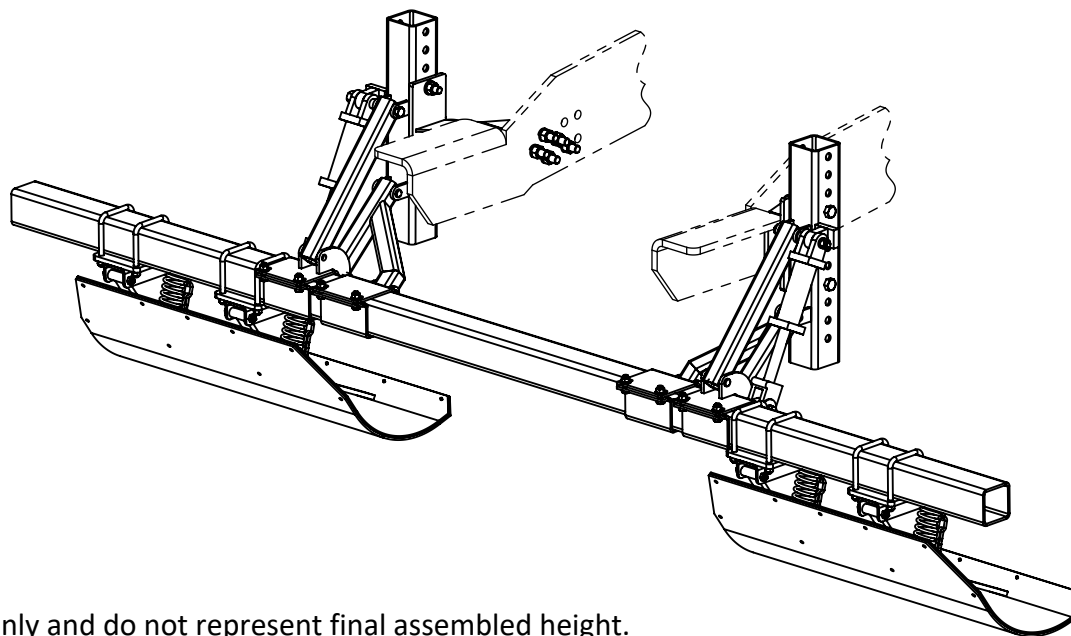
Safety Recommendations:

Prior to installation, removal or maintenance of May Wes Stalk Stompers, park tractor on level ground and lock the brakes. In addition, please follow all safety recommendations listed in the OEM owner's manual.

Installation:

- 1) Hold mount bracket #42309 up to the front right side of tractor frame matching the hole pattern in the bracket to existing hole locations in the tractor frame. Attach mount bracket to tractor using supplied M20 hardware.
- 2) Hold mount bracket #42310 up to the left right side of tractor frame matching the hole pattern in the bracket to existing hole locations in the tractor frame. Attach mount bracket to tractor using supplied M20 hardware.
- 3) Proceed to mounting the Lift Arm Assemblies using 3/4" hardware supplied with mount kit and instructions provided with each Lift Arm Kit.

* All orientation references are from the operators position.



NOTES:

- 1 Graphics are for reference only and do not represent final assembled height.



MAY WES
Original Poly People
A DIVISION OF PRIDE SOLUTIONS

120 Eastgate Drive SE
PO Box 7
Hutchinson, MN 55350

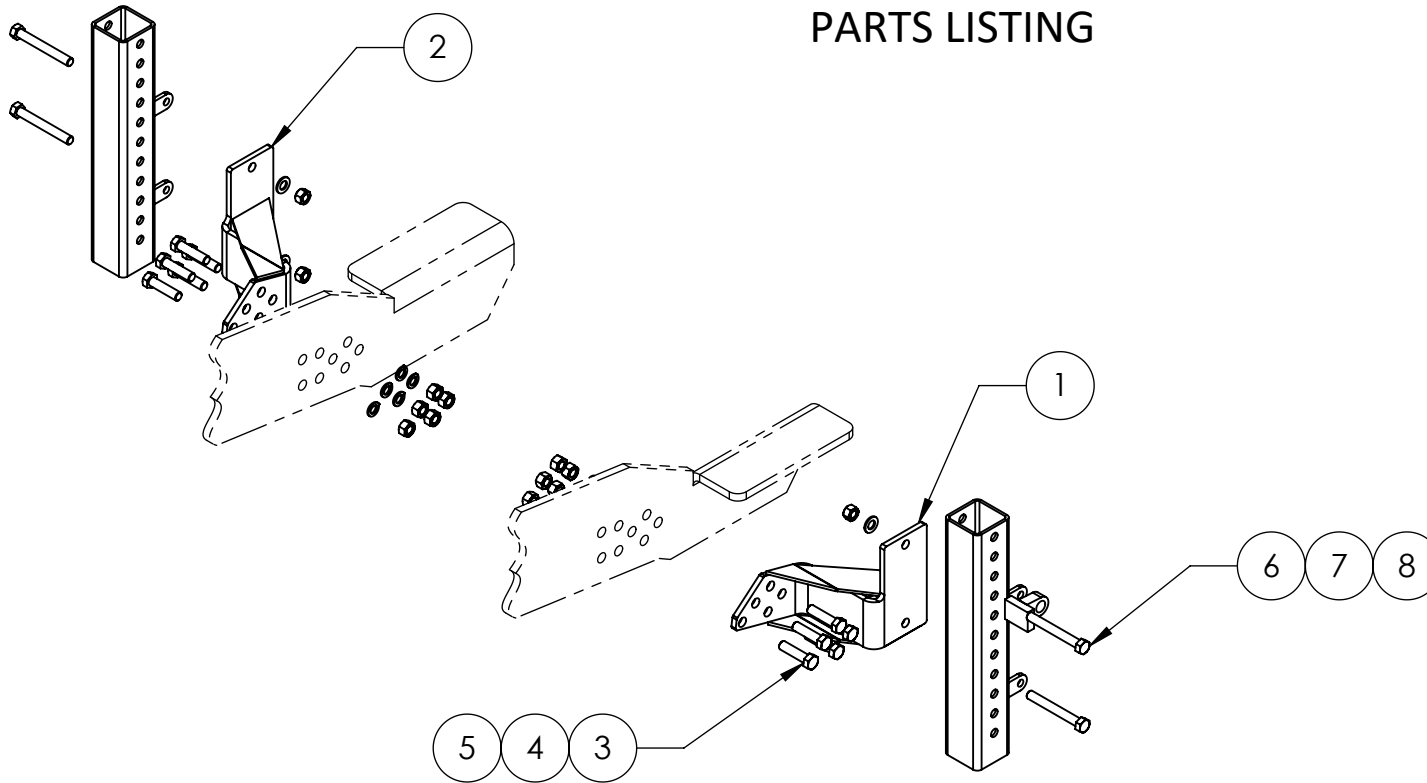
1-800-788-6483
1-320-587-2322
1-320-587-6112 (Fax)

WWW.MAYWES.COM

JOHN DEERE 9R SERIES (2015+)

TRACTOR STALK STOMPER

PARTS LISTING



8	00621	NUT, 3/4"-10 TOP LOCK	4
7	00236	WASHER, 3/4" FLAT SAE	4
6	00033	BOLT, 3/4"-10 X 6" HEX	4
5	01024	NUT, M20-2.5 HEX, CLASS 10	10
4	01023	WASHER, M20 SPRING LOCK	10
3	01021	BOLT, M20-2.5 X 80MM HEX	10
2	42310	WLDMT, TSS MOUNT BRKT, LH	1
1	42309	WLDMT, TSS MOUNT BRKT, RH	1
ITEM #	PART #	DESCRIPTION	QTY.



120 Eastgate Drive SE
PO Box 7
Hutchinson, MN 55350

1-800-788-6483
1-320-587-2322
1-320-587-6112 (Fax)

WWW.MAYWES.COM