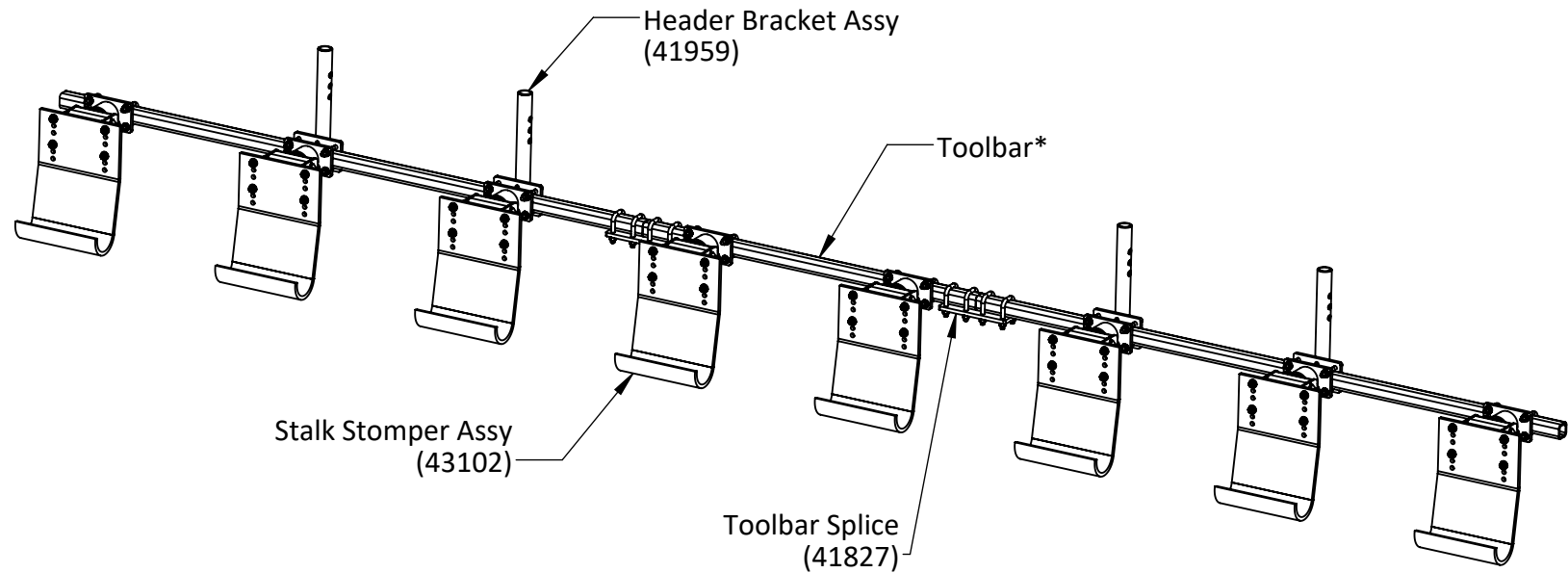


HARVESTEC 5000 & 6000 SERIES G4 TOOLBAR MOUNT STALK STOMPER



Notes:

- Illustration shown is for reference purposes only. Quantities and components will vary. Please refer to individual component part listing for specific information.
- Due to variation of implement configurations, row coverage under the feeder house may not be applicable.
- *Toolbar is not included in all kits. If a kit without Toolbar was ordered, the customer is responsible for providing required Toolbar.



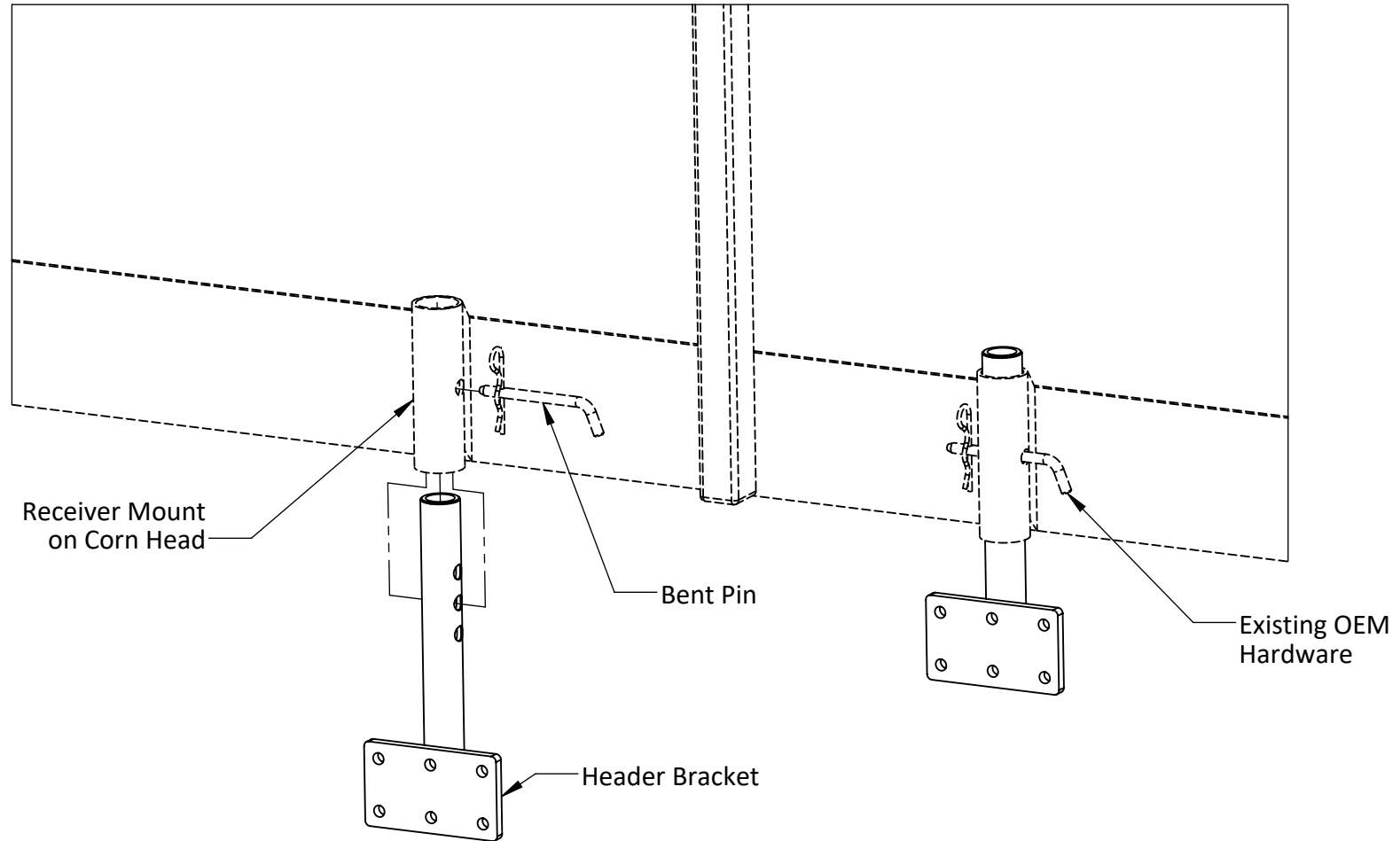
MAY WES
Original Poly People
A DIVISION OF PRIDE SOLUTIONS

120 Eastgate Drive SE
Hutchinson, MN 55350

1-800-788-6483
1-320-587-2322
1-320-587-6112 (Fax)

WWW.MAYWES.COM

HARVESTEC 5000 & 6000 SERIES HEADER BRACKET INSTALLATION



Installation Procedure:

- Park combine on level ground and lock the brakes.
- Raise the head and lock in the upright position.
- Slide Header Bracket (41959) into the existing Receiver Mounts on the head and secure in place reusing existing hardware



MAY WES
Original Poly People
A DIVISION OF PRIDE SOLUTIONS

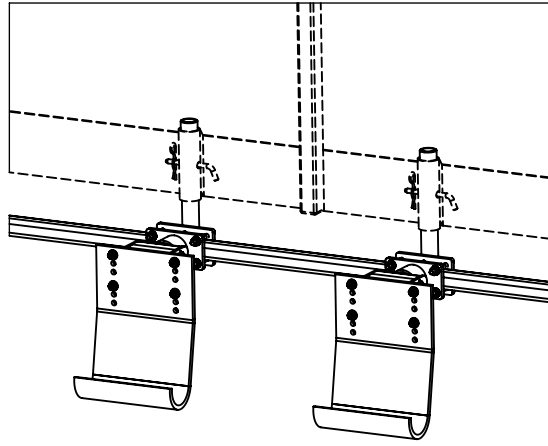
120 Eastgate Drive SE
Hutchinson, MN 55350

1-800-788-6483
1-320-587-2322
1-320-587-6112 (Fax)

WWW.MAYWES.COM

HARVESTEC 5000 & 6000 SERIES STALK STOMPER OPTIONAL SETUPS

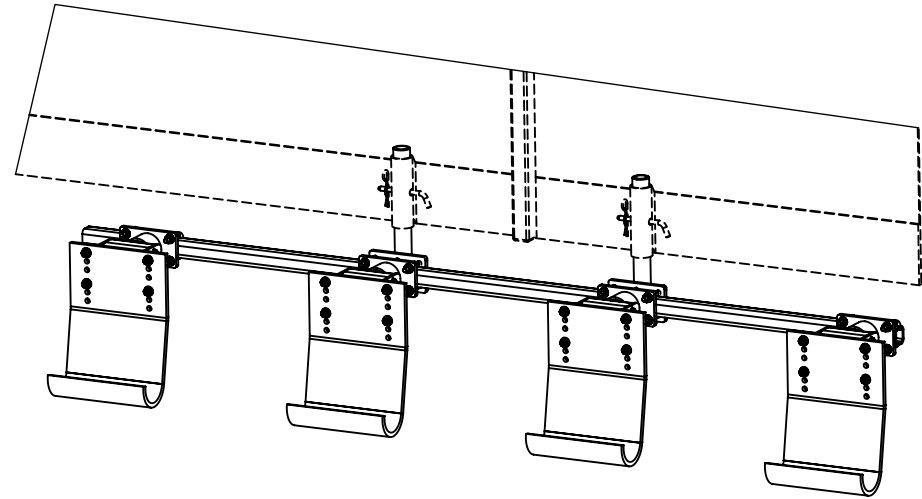
Non-Toolbar Mount Installation for 2 & 4 Row Kits



Non-Toolbar Installation Procedure:

- Fasten Mount Bracket to Header Bracket using supplied hardware.
- Install Stalk Stomper into mating features of Mount Bracket and secure with Lock Pin.

Toolbar Mount Installation for 6, 8, & 12 Row Kits



Toolbar Installation Procedure:

- Fasten Toolbar to Header Brackets using supplied bolts, Lock Washers and nuts.
- Note:** If kit was purchased with Toolbar included, Toolbar may need to be trimmed to fit.
- Fasten Mount Brackets to Toolbar using supplied U-Bolts, Lock Washers and Nuts on center of the rows to be stomped.
- Install Stalk Stomper into mating features of Mount Bracket and secure with Lock Pin.



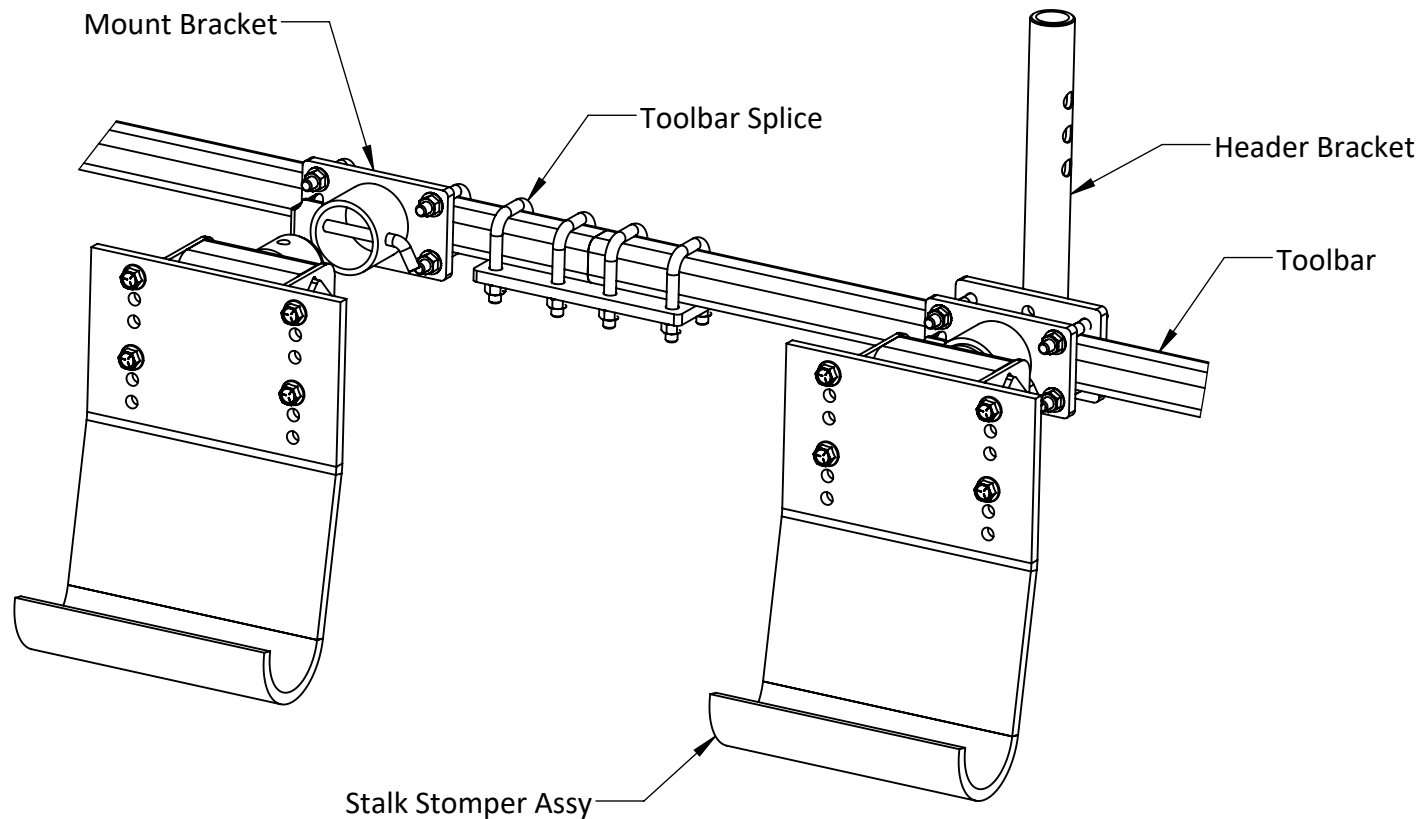
MAY WES
Original Poly People
A DIVISION OF PRIDE SOLUTIONS

120 Eastgate Drive SE
Hutchinson, MN 55350

1-800-788-6483
1-320-587-2322
1-320-587-6112 (Fax)

WWW.MAYWES.COM

G4 TOOLBAR MOUNT STALK STOMPER ASSEMBLY/INSTALLATION INSTRUCTIONS



Assembly/Installation Procedure:

- Fasten Toolbar to Head Mount Brackets using supplied U-Bolts, Lock Washers and Nuts.
Note: If kit was purchased with Toolbar included, Toolbar may need to be trimmed to fit.
- Fasten Mount Brackets to Toolbar using supplied U-Bolts, Lock Washers and Nuts on center of the rows to be stomped.
- Install Stalk Stomper into mating features of Mount Bracket and secure with Lock Pin.
- **When applicable**
Fasten Toolbars together using the Toolbar Splice (not included in all kits).



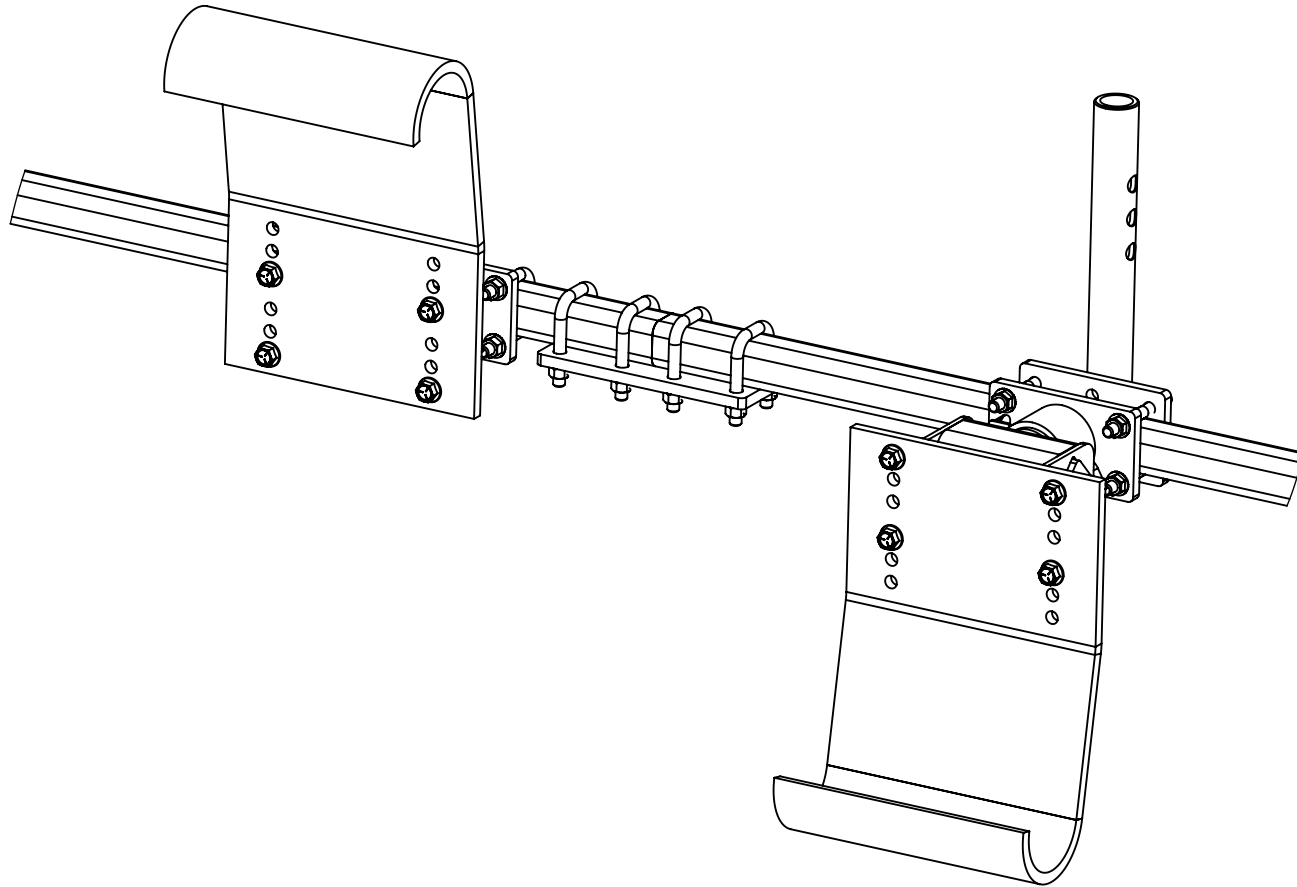
MAY WES
Original Poly People
A DIVISION OF PRIDE SOLUTIONS

120 Eastgate Drive SE
Hutchinson, MN 55350

1-800-788-6483
1-320-587-2322
1-320-587-6112 (Fax)

WWW.MAYWES.COM

QD2 TOOLBAR MOUNT STALK STOMPER TRANSPORT POSITION



Transport/Storage Position(s) (Toolbar Mount Only):

- 1) Remove lock pin to release Stalk Stomper Shoe
- 2) Rotate stomper to desired position (90°, 180°, 270°)
- 3) Replace lock pin to secure Stalk Stomper



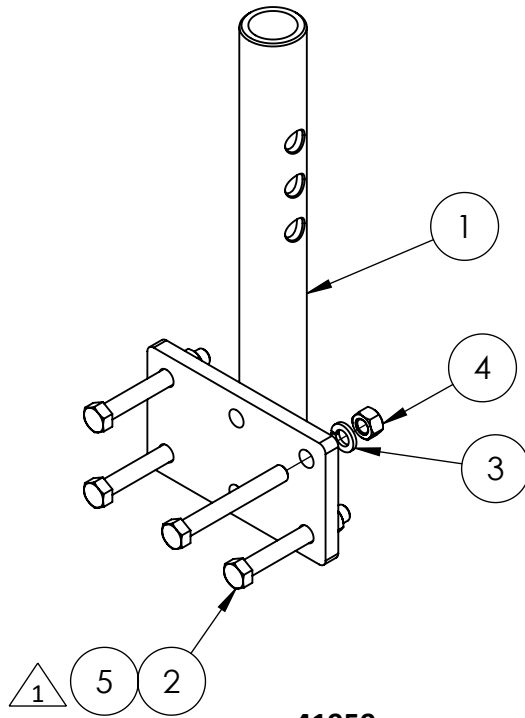
MAY WES
Original Poly People
A DIVISION OF PRIDE SOLUTIONS

120 Eastgate Drive SE
Hutchinson, MN 55350

1-800-788-6483
1-320-587-2322
1-320-587-6112 (Fax)

WWW.MAYWES.COM

HARVESTEC 5000 & 6000 SERIES TOOLBAR MOUNT STALK STOMPER ASSEMBLY INSTRUCTIONS/PARTS LISTING

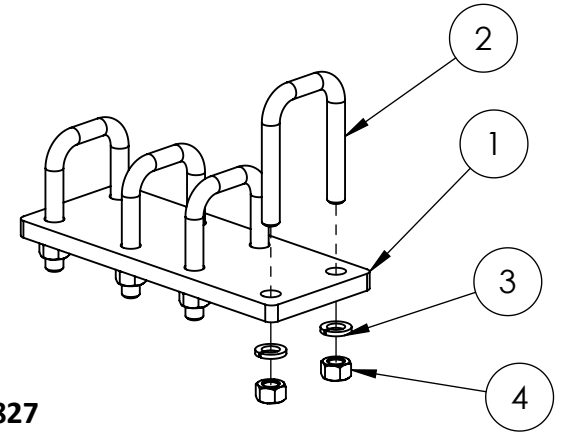


41959
HEADER BRACKET
ASSEMBLY

ITEM#	PART#	DESCRIPTION	QTY
1	41957	HEAD MOUNT BRACKET	1
2	00154	BOLT, 1/2"-13 X 4" HEX	4
3	00255	WASHER, 1/2" SPRING LOCK	4
4	00214	NUT, 1/2"-13 HEX	4
5	00146	Bolt, 1/2"-13 X 2" Hex	4

NOTE:

△ Use 2" Bolt for Non-Toolbar application and 4" Bolt for Toolbar application.



41827
TOOLBAR SPLICE

ITEM #	PART #	DESCRIPTION	QTY
1	22341	SPLICE PLATE	1
2	00986	U-BOLT 1/2"-13	4
3	00255	WASHER, 1/2" SPRING LOCK	8
4	00214	NUT, 1/2"-13 HEX	8

Items 9 and 10 listed below (but not shown) are not included in all kits, please order individually if needed.

ITEM #	PART #	DESCRIPTION	QTY
9	41672	72" TOOLBAR (2" X 2")	VARIABLE
10	41673	102" TOOLBAR (2" X 2")	VARIABLE

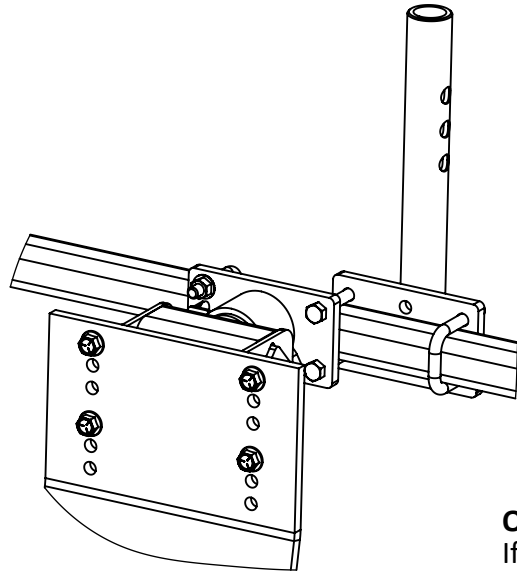


120 Eastgate Drive SE
Hutchinson, MN 55350

1-800-788-6483
1-320-587-2322
1-320-587-6112 (Fax)

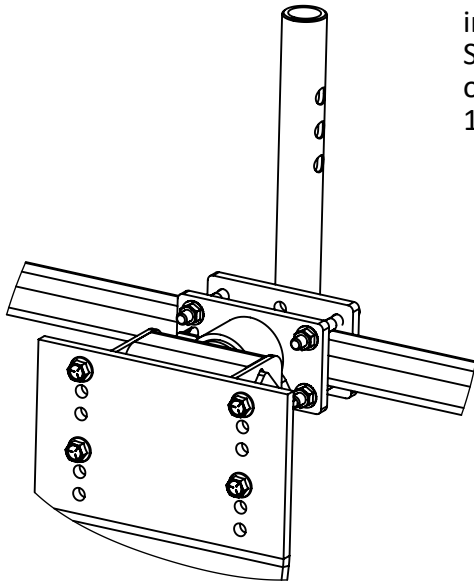
WWW.MAYWES.COM

QD2 TOOLBAR MOUNT STALK STOMPER OPTIONAL SETUPS



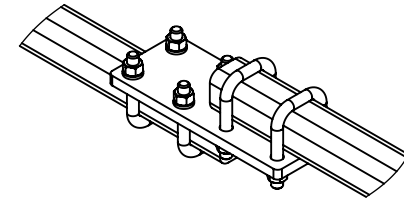
Overlapping Brackets

If necessary, Mount Brackets and Header Brackets can be overlapped in multiple positions to allow the Stalk Stomper Assy to be positioned on center of the row. Replace U-Bolts with 1/2"-13 x 4" Hex Bolts as shown on the left.



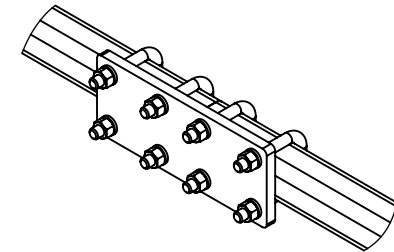
Offsetting Toolbars

If necessary, the Toolbars may be offset in any direction by positioning Toolbars on opposite sides of the Toolbar Splice as shown below.



Toolbar Splice Orientation

The Toolbar Splice Plate can be positioned on the bottom, top, front or back (shown below) of the Toolbars to provide the most rigidity per individual setup.



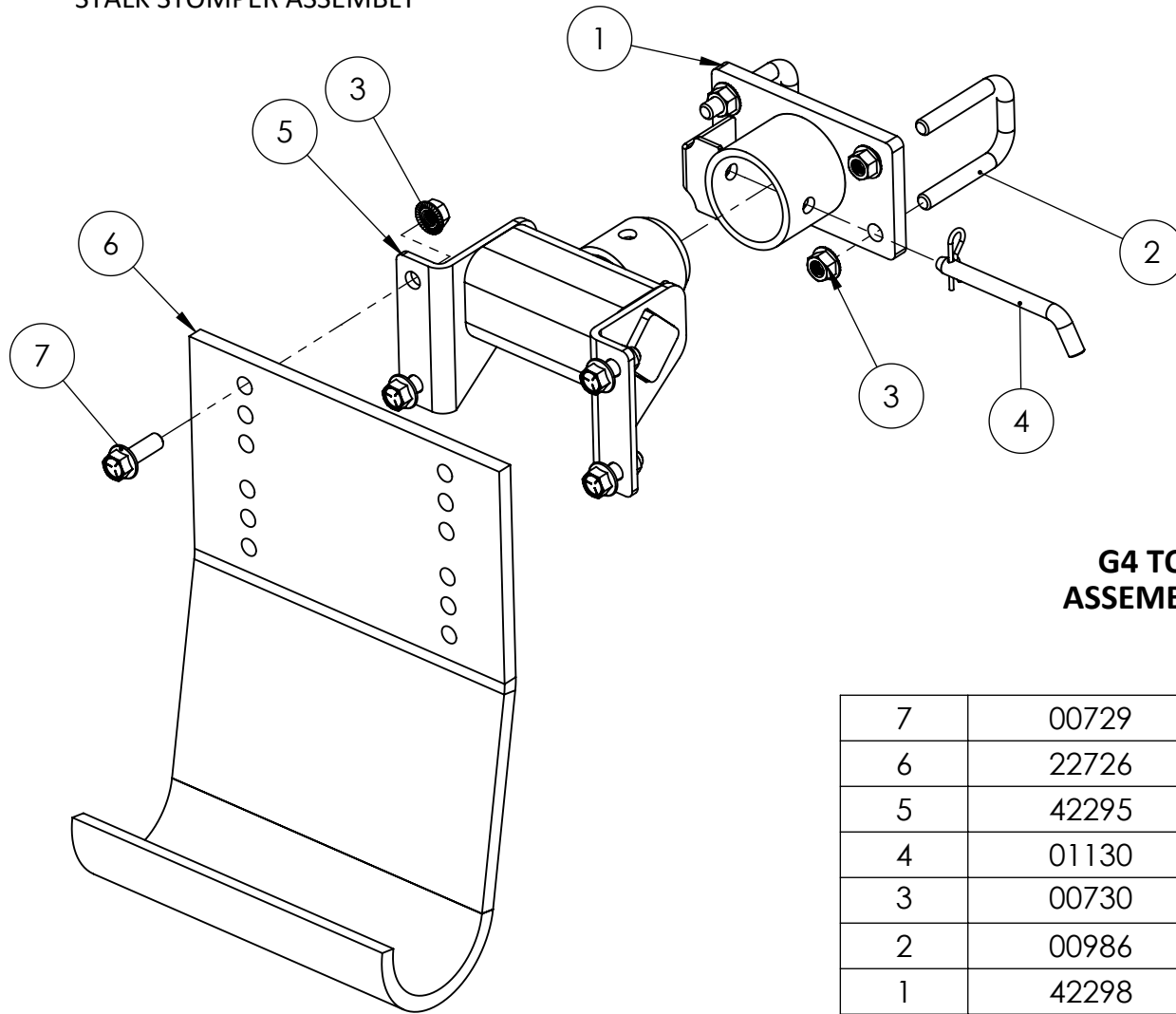
MAY WES
Original Poly People
A DIVISION OF PRIDE SOLUTIONS

120 Eastgate Drive SE
Hutchinson, MN 55350

1-800-788-6483
1-320-587-2322
1-320-587-6112 (Fax)

WWW.MAYWES.COM

43102
G4 TOOLBAR MOUNT
STALK STOMPER ASSEMBLY



G4 TOOLBAR MOUNT STALK STOMPER
ASSEMBLY INSTRUCTIONS / PARTS LISTING

7	00729	BOLT, 1/2"-13 X 1-1/2" HEX FLANGE	4
6	22726	SHOE, STALK STOMPER	1
5	42295	STALK STOMPER TORSION ASSY	1
4	01130	PIN, 1/2" X 4" BENT HITCH	1
3	00730	Nut 1/2"-13 Serrated Flange	8
2	00986	U-BOLT 1/2"-13	2
1	42298	WLDMT; TOOLBAR MNT BRKT	1
ITEM #	PART #	DESCRIPTION	QTY.