

G4 Stalk Stomper Instructions



CAUTION

PLEASE REFER TO YOUR EQUIPMENT MANUFACTURER'S OPERATORS MANUAL FOR PERTINENT SAFETY PRECAUTIONS



IMPORTANT

Read all instructions before starting installation

Safety Recommendations:

Prior to installation, removal or maintenance of May Wes Stalk Stompers, please follow the safety steps listed below, in addition to all safety recommendations listed in the OEM owner's manuals.

- Park implement on level ground and lock the brakes.
- Raise the head and lock in the upright position.
- Support all row units that stalk stompers will be installed on to ensure row units stay stationary during installation (corn head row unit mount application only).

Setup/Operating Recommendations:

May Wes stalk stompers are intended to be setup/operated with moderate ground contact during field operation. To achieve the recommended operating setup, with the combine parked on a hard, level surface lower the head to field operating height. With the head at operating height, the stalk stompers should be just touching the ground.

Note: As with all aftermarket product applications please maintain an awareness of the stalk stompers during operation. The head/stalk stompers should always be raised prior to backing up to prevent damage to the stalk stompers. The design of the shoe and torsion unit is intended to prevent or minimize damage if the head/stalk stompers are inadvertently left down while backing up.

Maintenance Recommendations:

Your May Wes G4 stalk stompers should require minimal maintenance during operation. During routine equipment maintenance, visually inspect the stalk stompers and mounting brackets for any damaged parts and repair or replace as necessary. Check all mounting hardware to ensure tightness and retighten if necessary.

Transport Recommendations:

If a header cart is used to transport head, stalk stomper shoes may need to be removed on rows that interfere with the header cart. Follow the Safety Recommendations listed above prior to beginning the recommended procedure listed below for transport. See page 2 for Transport Position (toolbar mount only).

Storage Recommendations:

To prevent damage, it is recommended that stalk stompers be removed prior to storing the head.



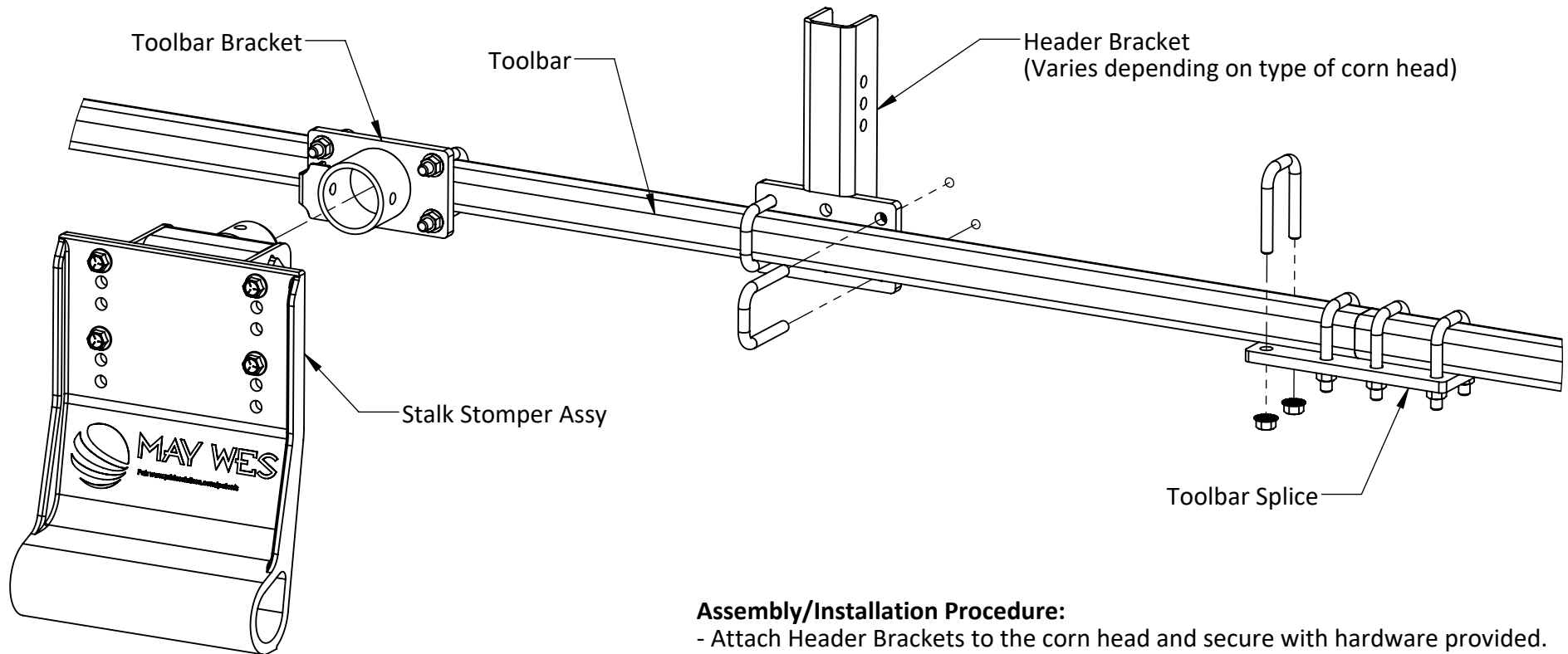
MAY WES
Original Poly People
A DIVISION OF PRIDE SOLUTIONS

120 Eastgate Drive SE
Hutchinson, MN 55350

1-800-788-6483
1-320-587-2322
1-320-587-6112 (Fax)

WWW.MAYWES.COM

G4 TOOLBAR MOUNT STALK STOMPER ASSEMBLY/INSTALLATION INSTRUCTIONS



Assembly/Installation Procedure:

- Attach Header Brackets to the corn head and secure with hardware provided.
- Fasten Toolbar to Vertical Brackets using supplied U-Bolts and Lock Nuts.

Note: If kit was purchased with Toolbar included, Toolbar may need to be trimmed to fit.

- Fasten Toolbar Brackets to Toolbar using supplied U-Bolts and Lock Nuts on center of the rows to be stomped.
- Install Stalk Stomper Assy into mating features in the Toolbar Bracket.
- **When applicable**
Fasten Toolbars together using the Toolbar Splice (not included in all kits).



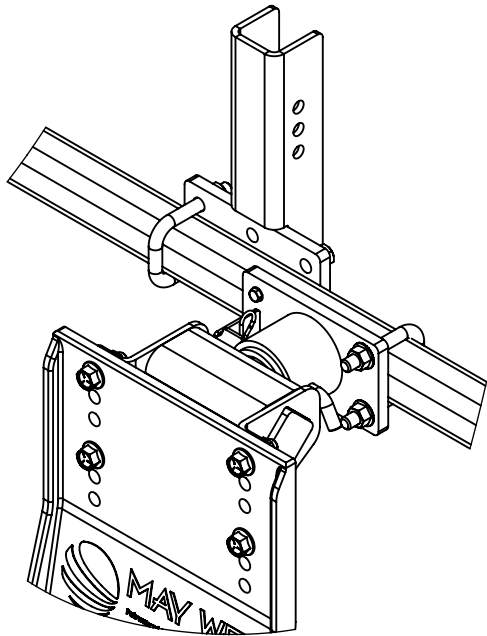
MAY WES
Original Poly People
A DIVISION OF PRIDE SOLUTIONS

120 Eastgate Drive SE
Hutchinson, MN 55350

1-800-788-6483
1-320-587-2322
1-320-587-6112 (Fax)

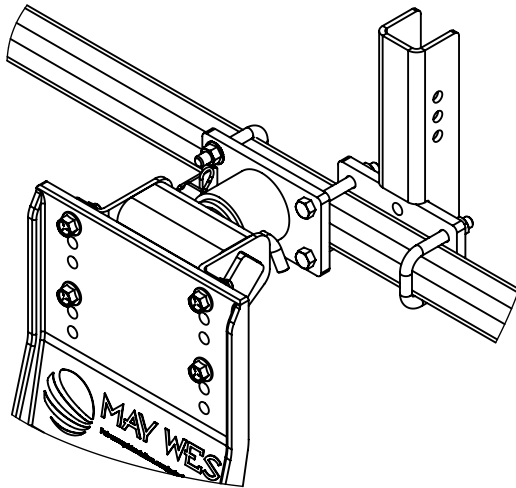
WWW.MAYWES.COM

G4 TOOLBAR MOUNT STALK STOMPER OPTIONAL SETUPS



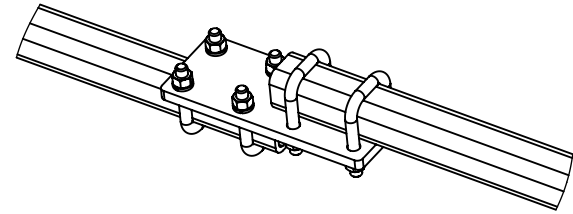
Overlapping Brackets

If necessary, Mount Brackets and Vertical Brackets can be overlapped in multiple positions to allow the Stalk Stomper Assy to be positioned on center of the row. Replace U-Bolts with 1/2"-13 x 4" Hex Bolts (not supplied) as shown on the left.



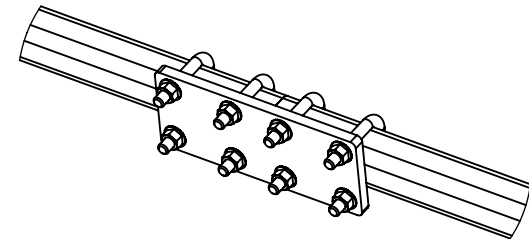
Offsetting Toolbars

If necessary, the Toolbars may be offset in any direction by positioning Toolbars on opposite sides of the Toolbar Splice as shown below.

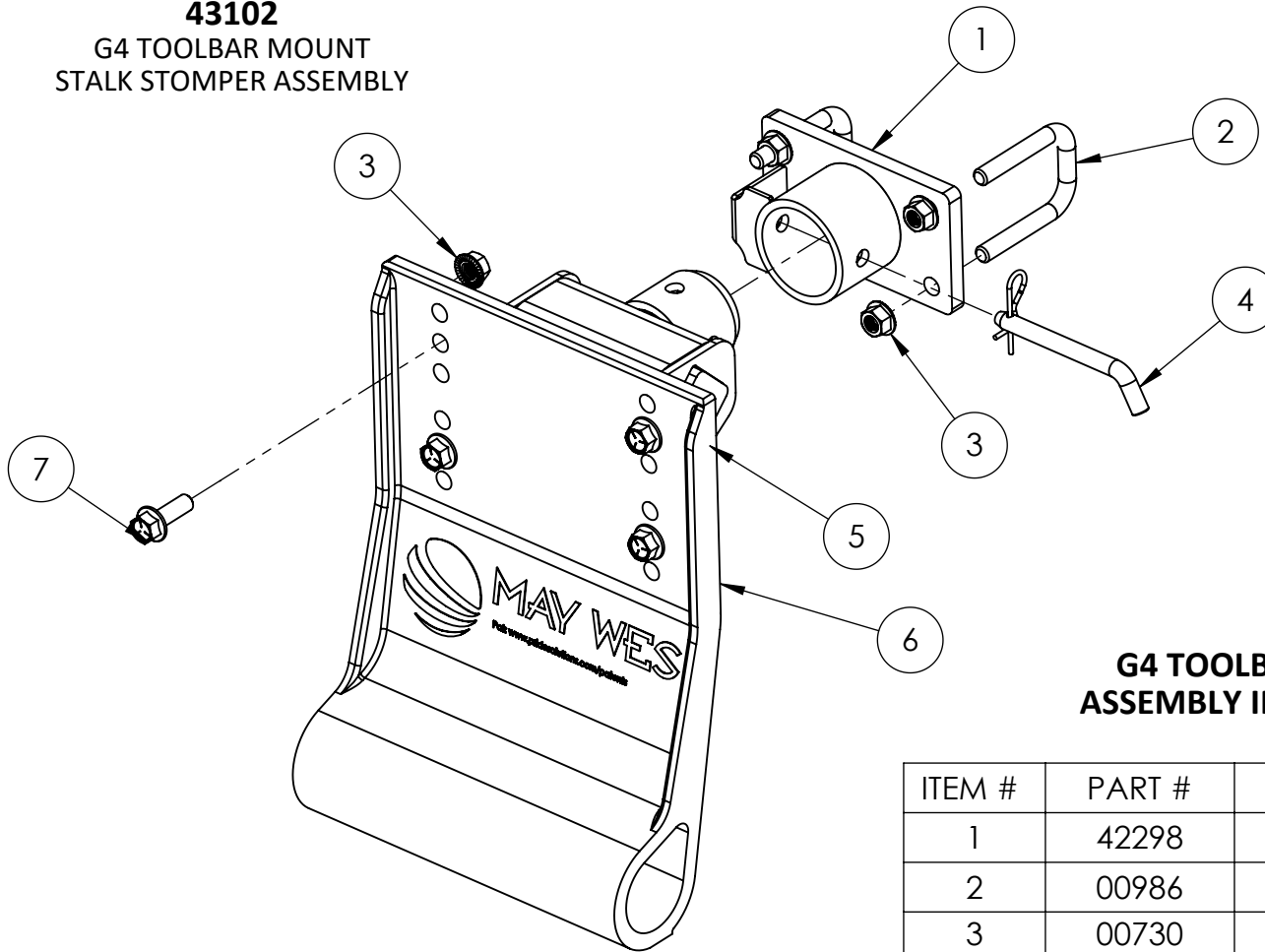


Toolbar Splice Orientation

The Toolbar Splice Plate can be positioned on the bottom, top, front or back (shown below) of the Toolbars to provide the most rigidity per individual setup.



43102
G4 TOOLBAR MOUNT
STALK STOMPER ASSEMBLY



G4 TOOLBAR MOUNT STALK STOMPER
ASSEMBLY INSTRUCTIONS / PARTS LISTING

ITEM #	PART #	DESCRIPTION	QTY
1	42298	WLDMT; TOOLBAR MNT BRKT	1
2	00986	U-BOLT 1/2"-13	2
3	00730	Nut 1/2"-13 Serrated Flange	8
4	01130	PIN, 1/2" X 4" BENT HITCH	1
5	42295	STALK STOMPER TORSION ASSY	1
6	24100	SHOE, G4 MOLDED	1
7	00729	BOLT, 1/2"-13 X 1-1/2" HEX FLANGE	4



MAY WES
Original Poly People
 A DIVISION OF PRIDE SOLUTIONS

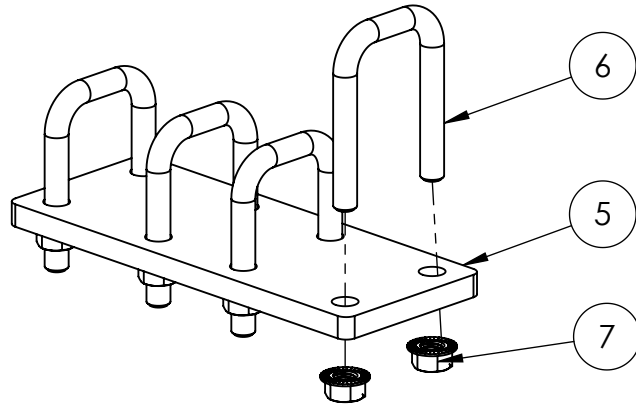
120 Eastgate Drive SE
 Hutchinson, MN 55350

1-800-788-6483
 1-320-587-2322
 1-320-587-6112 (Fax)

WWW.MAYWES.COM

TOOLBAR MOUNT STALK STOMPER ASSEMBLY INSTRUCTIONS / PARTS LISTING

41827 TOOLBAR SPLICE



ITEM #	PART #	DESCRIPTION	QTY
5	22341	SPLICE PLATE	1
6	00986	U-BOLT 1/2"-13	4
7	00730	Nut 1/2"-13 Serrated Flange	8



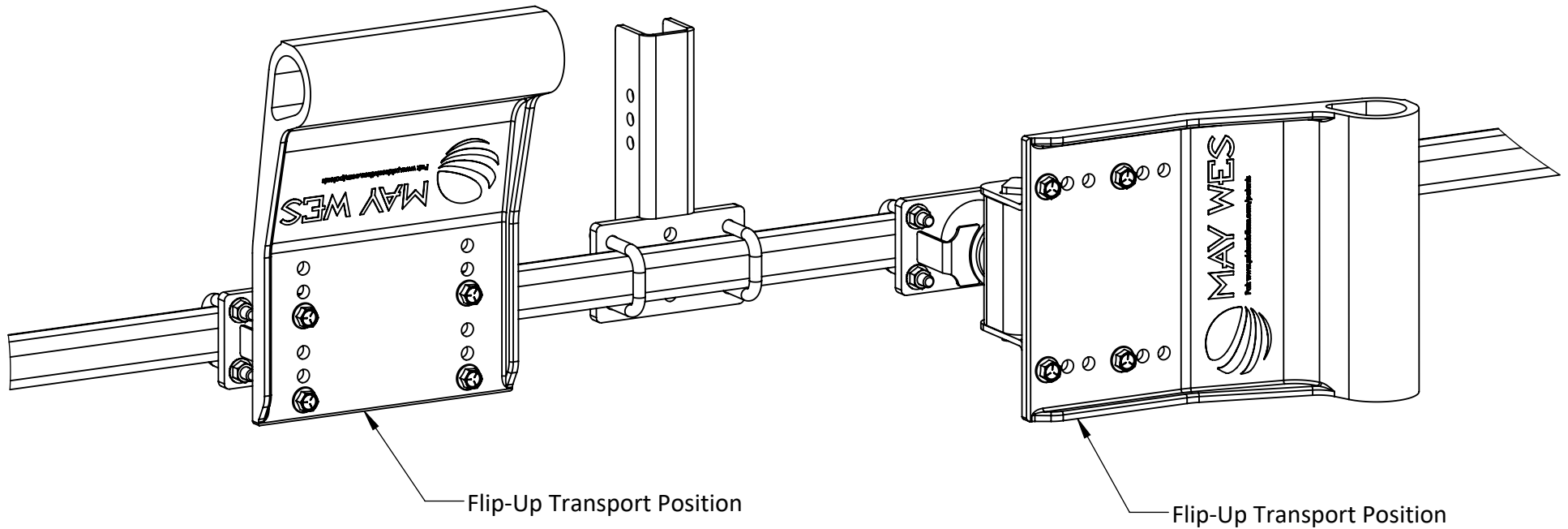
MAY WES
Original Poly People
A DIVISION OF PRIDE SOLUTIONS

120 Eastgate Drive SE
Hutchinson, MN 55350

1-800-788-6483
1-320-587-2322
1-320-587-6112 (Fax)

WWW.MAYWES.COM

G4 TOOLBAR MOUNT STALK STOMPER TRANSPORT POSITION



Transport/Storage Position(s) (Toolbar Mount Only):

- 1) Remove lock pin to release Stalk Stomper Shoe
- 2) Rotate stomper to desired position (90°, 180°, 270°)
- 3) Replace lock pin to secure Stalk Stomper



MAY WES
Original Poly People
A DIVISION OF PRIDE SOLUTIONS

120 Eastgate Drive SE
Hutchinson, MN 55350

1-800-788-6483
1-320-587-2322
1-320-587-6112 (Fax)

WWW.MAYWES.COM