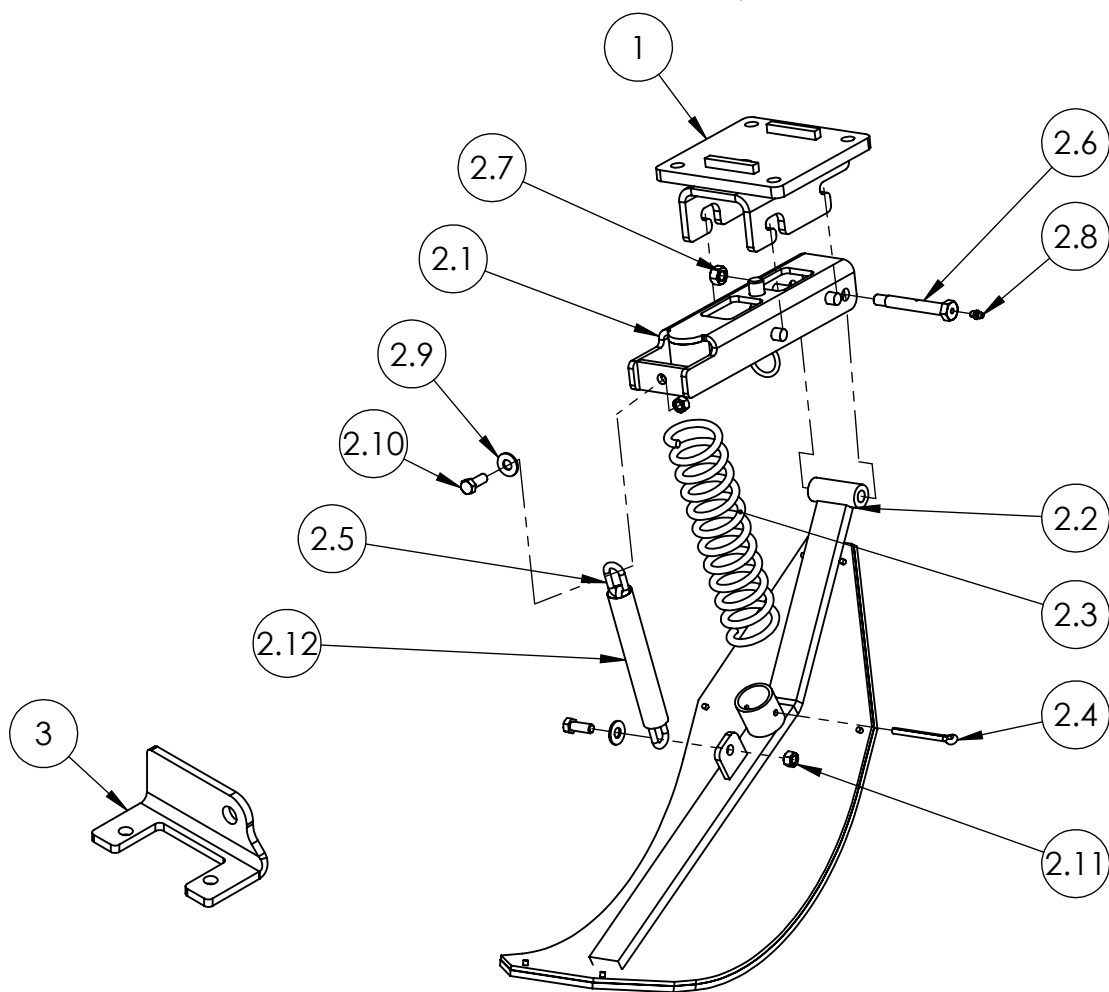


CASE IH 2200/2400/3200/3400 - NEW HOLLAND 96C/96D/98C/98D/996 QD2 STALK STOMPER PARTS LISTING/ASSEMBLY INSTRUCTIONS



NOTES:

- 1 Item 3 is optional and not included in the kit, please order separately
- 2 43016 - 14" Stalk Stalk Shoe Assy
- 3 41748 - 14" Stalk Stomper Shoe W/Poly
- 4 Install Self-Tapping Grease Fitting into end of Pivot Bolt.
Torque grease fitting to 65-70 inch pounds. DO NOT OVERTIGHTEN!

ITEM #	PART #	DESCRIPTION	QTY	ITEM #	PART #	DESCRIPTION	QTY
1	43008	QD2 HEADER BRACKET	1	2.7	00213	NUT, 7/16"-14 HEX TOP LOCK	1
2	43003	STALK STOMPER ASSY 9"	1	2.8	01009	GREASE FITTING, 1/4"-28 STRAIGHT	1
2.1	43004	SHOE BRACKET ASSY	1	2.9	00249	WASHER, 3/8" FLAT	2
2.2	41825	STALK STOMPER SHOE W/POLY 9"	1	2.10	00104	BOLT, 3/8"-16 X 1" HEX	2
2.3	01040	SPRING	1	2.11	00209	NUT, 3/8"-16 HEX	2
2.4	00691	PIN, 1/4" X 3" COTTER	1	2.12	01046	CHAIN SLEEVE	1
2.5	00931	CHAIN	1	3	22043	MOUNT BRACKET (OPTIONAL)	
2.6	01001	BOLT, CUSTOM (GREASEABLE)	1				



120 Eastgate Drive SE
PO Box 7
Hutchinson, MN 55350

1-800-788-6483
1-320-587-2322
1-320-587-6112 (Fax)

WWW.MAYWES.COM

CASE IH 2200/2400/3200/3400 - NEW HOLLAND 96C/96D/98C/98D/996 STALK STOMPER INSTALLATION

Safety Procedure:

- Park combine on level ground and engage the parking brake.
- Raise the head and lock in the upright position.
- Support all row units that stalk stompers will be installed on to ensure row units remain stationary during installation.

Installation Procedure:

- Remove the factory gearbox support brackets (Fig. 1). Replace with Header Bracket (43008) positioning the mount plate as pictured below in Figure 2.
- **Note:** If installing stalk stomper on the same row that the deck plate cylinder is attached; replace the factory mounting bracket with Mount Bracket (22043) which is not included in the kit, please order separately (Fig. 3).
- Lift the Stalk Stomper Assy (43003) into mating features in the Header Bracket (43008). Pull Stalk Stomper Assy back until lock pin assembly snaps into place.

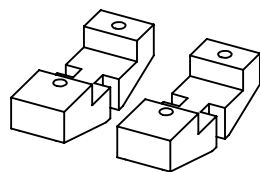
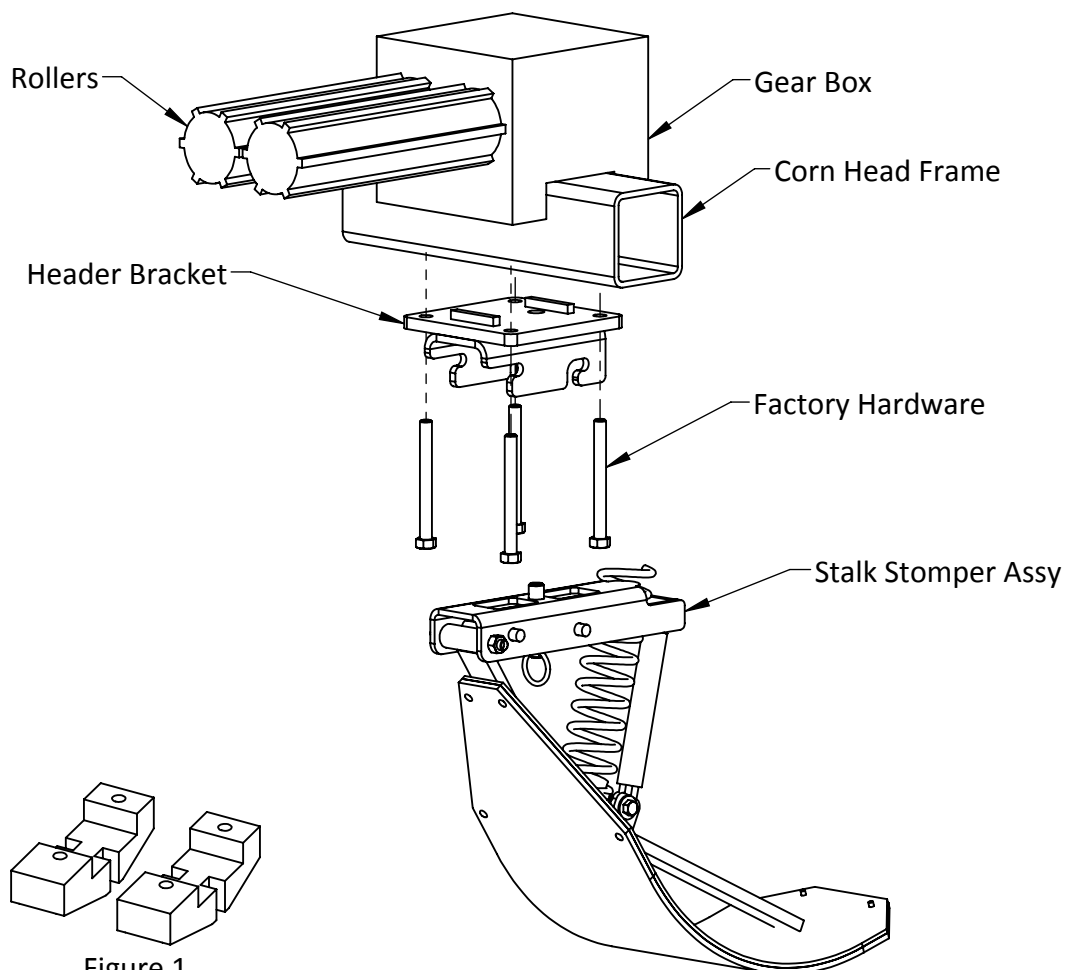


Figure 1
Gear Box
Support Brackets

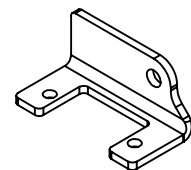


Figure 3
Deck Plate
Mount Bracket
(Optional)