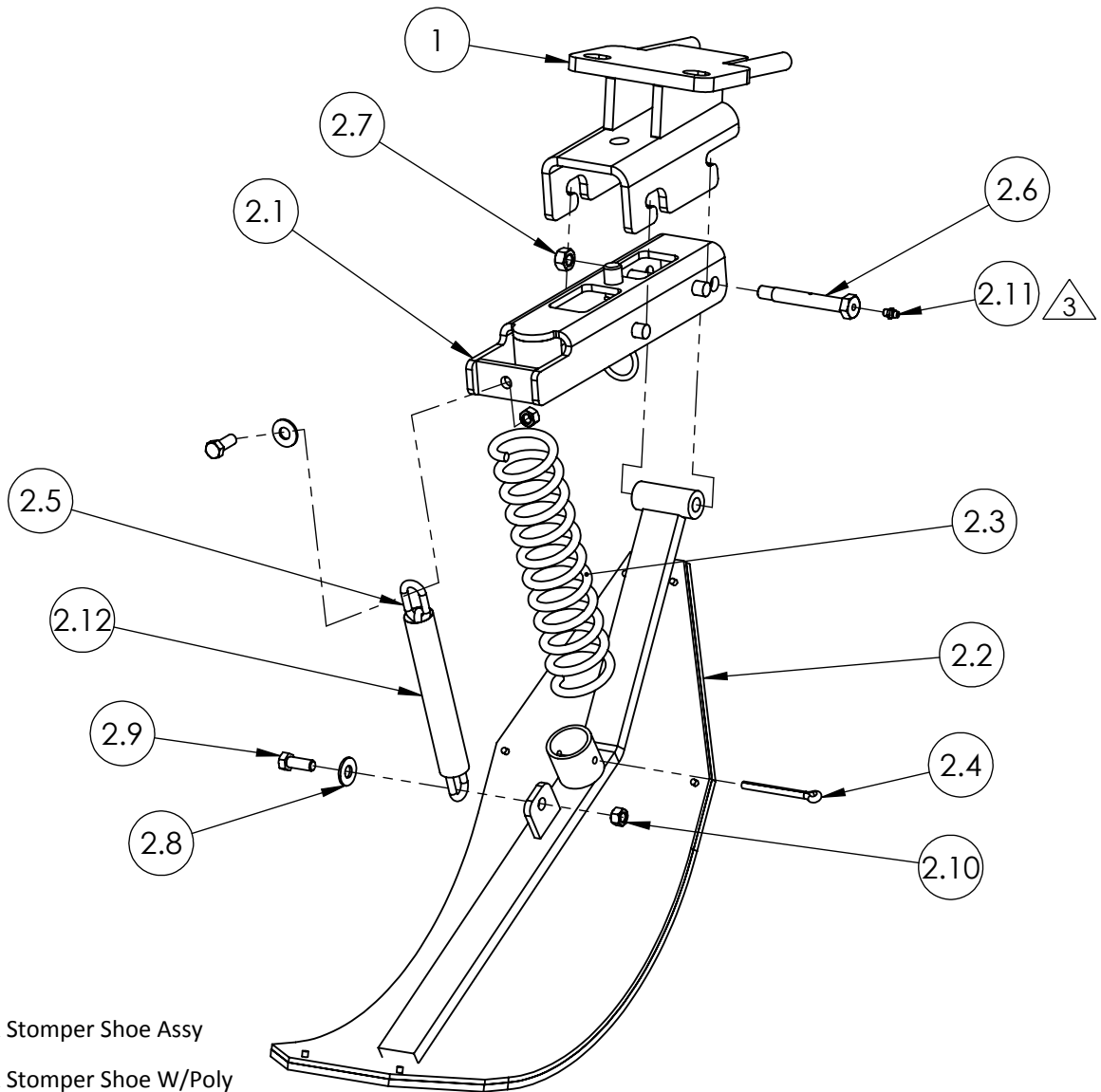


# JOHN DEERE 90/40 SERIES

## ALL ROWS EXCEPT ROW 6 ON 8 ROW HEAD

### QD2 STALK STOMPER PARTS LISTING/ASSEMBLY INSTRUCTIONS



**NOTES:**

- ① 43016 - 14" Stalk Stomper Shoe Assy
- ② 41748 - 14" Stalk Stomper Shoe W/Poly
- ③ Install Self-Tapping Grease Fitting into end of Pivot Bolt  
Torque grease fitting to 65-70 inch pounds. DO NOT OVERTIGHTEN!

ITEM #	PART #	DESCRIPTION	QTY	ITEM #	PART #	DESCRIPTION	QTY
1	43010	QD2 HEADER BRACKET	1	2.6	01001	BOLT, CUSTOM (GREASEABLE)	1
① 2	43003	STALK STOMPER ASSY 9"	1	2.7	00213	NUT, 7/16"-14 HEX TOP LOCK	1
2.1	43004	SHOE BRACKET ASSY	1	2.8	00249	WASHER, 3/8" FLAT	2
② 2.2	41825	STALK STOMPER SHOE W/POLY 9"	1	2.9	00104	BOLT, 3/8"-16 X 1" HEX	2
2.3	01040	SPRING	1	2.10	00209	NUT, 3/8"-16 HEX	2
2.4	00691	PIN, 1/4" X 3" COTTER	1	2.11	01009	GREASE FITTING, 1/4"-28 STRAIGHT	1
2.5	00931	CHAIN	1	2.12	01046	CHAIN SLEEVE	1



**120 Eastgate Drive SE  
PO Box 7  
Hutchinson, MN 55350**

**1-800-788-6483  
1-320-587-2322  
1-320-587-6112 (Fax)**

**WWW.MAYWES.COM**

**JOHN DEERE 90/40 SERIES**  
**ALL ROWS EXCEPT ROW 6 ON 8 ROW HEAD**  
**STALK STOMPER INSTALLATION**

**Safety Procedure:**

- Park Combine on level ground and engage the parking brake.
- Raise the head and lock in the upright position.
- Support all row units that stalk stompers will be installed on to ensure row units remain stationary during installation.

**Installation Procedure:**

- Remove the gear box bolts and the eye bolts which secure the row unit to the main frame of the corn head. Replace the eyebolts with Header Bracket (43010) by inserting the threaded rods thru the roller frame mount. Insert the gear box bolts thru the header bracket into the gearbox and tighten to factory recommended torque specifications. Secure the threaded rods reusing the factory hardware and tighten to factory recommended torque specifications (Fig. 1).
- Lift the Stalk Stomper Assy (43003) into mating features in the Header Bracket (43010). Pull Stalk Stomper Assembly back until lock pin assembly snaps into place.

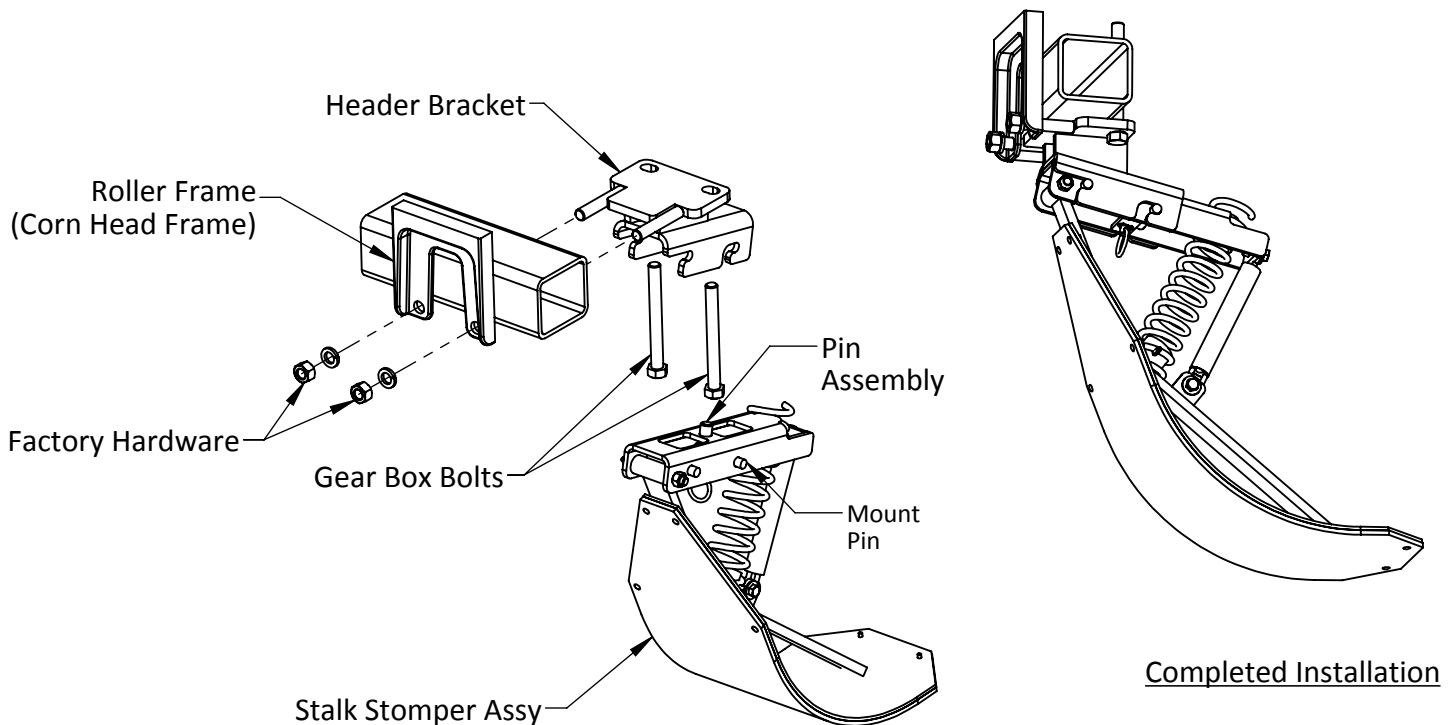


Figure 1