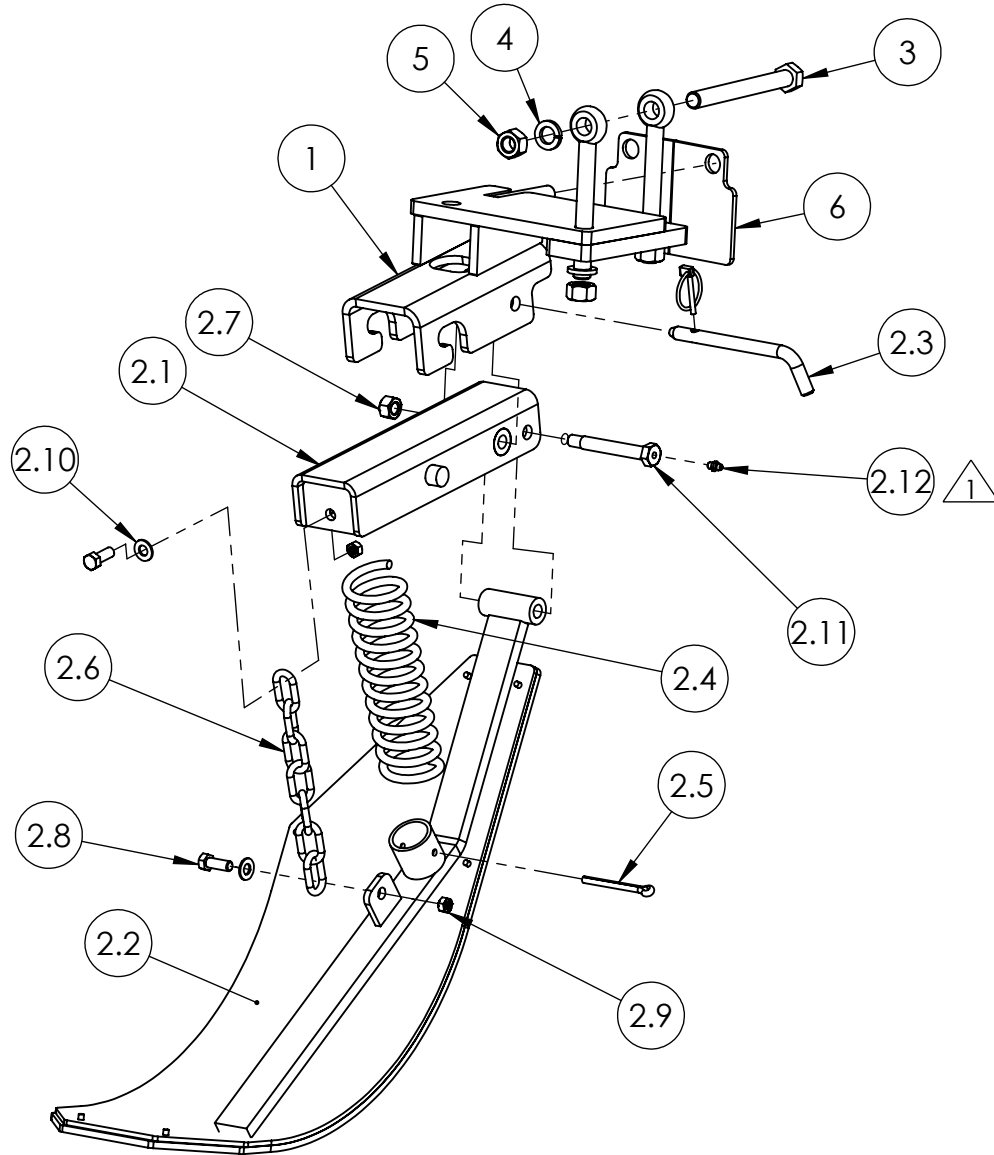


JOHN DEERE 90/40 SERIES

ROW 6 ON 8 ROW HEAD

STALK STOMPER PARTS LISTING/ASSEMBLY INSTRUCTIONS



NOTES:

1 Install Self-Tapping Grease Fitting into end of Pivot Bolt
Torque grease fitting to 65-70 inch pounds. DO NOT OVERTIGHTEN!

ITEM#	PART#	DESCRIPTION	QTY	ITEM#	PART#	DESCRIPTION	QTY
1	41942	QD HEADER BRACKET - OFFSET RIGHT	1	2.8	00104	BOLT, 3/8"-16 X 1" HEX	2
2	41944	OFFSET RIGHT STALK STOMPER ASSY	1	2.9	00208	NUT, 5/16"-18 TOP LOCK	2
2.1	41824	SHOE BRACKET	1	2.10	00249	WASHER, 3/8" FLAT SAE	2
2.2	41858	OFFSET RIGHT STALK STOMPER	1	2.11	01001	BOLT, CUSTOM (GREASEABLE)	1
2.3	41746	PIN ASSY (WITH LYNCH PIN)	1	2.12	01009	GREASE FITTING, 1/4"-28 STRAIGHT	1
2.4	40649	SPRING	1	3	01003	BOLT, 5/8"-11 X 6-1/2" HEX	1
2.5	00691	PIN, 1/4" X 3" COTTER	1	4	00235	WASHER, 5/8" SPRING LOCK	3
2.6	00931	CHAIN	1	5	00195	NUT, 5/8"-11 REGULAR	3
2.7	00216	NUT, 1/2"-13 TOP LOCK	1	6	22376	SHIELD PLATE	1



**120 Eastgate Drive SE
PO Box 7
Hutchinson, MN 55350**

**1-800-788-6483
1-320-587-2322
1-320-587-6112 (Fax)**

WWW.MAYWES.COM

JOHN DEERE 90/40 SERIES

ROW 6 ON 8 ROW HEAD

STALK STOMPER INSTALLATION

Safety Procedure:

- Park Combine on level ground and engage the parking brake.
- Raise the head and lock in the upright position.
- Support all row units that stalk stompers will be installed on to ensure row units remain stationary during installation.

Installation Procedure: (See illustrations for reference)

- Remove the gear box bolt and the eyebolt from the right side* of the row unit which secures the row unit to the main frame of the corn head. Replace the eyebolt with Header Bracket (41942) by inserting the threaded rod thru the roller frame mount on right side* of the row unit. Insert the gear box bolt thru the Header Bracket into the gearbox and tighten to factory recommended torque specifications.
- Remove the nut and washer from the eyebolt on the left side* of the row unit but leave the eyebolt in place. Place the Shield Plate (22376) over the threaded rod and eye bolt on the front side of the roller frame. Secure the threaded rod, eyebolt and Shield Plate reusing the factory hardware and tighten to factory recommended torque specifications.
Note: If the corn head has a guard plate for the deck plate shaft on the front side of the roller frame, reinstall the guard plate between the roller frame and the Shield Plate.
- Reusing two of the factory eyebolts, secure the right side* of the Header Bracket by placing the eyebolts thru the Header Bracket from the top and securing them around the 3" x 4" main beam and to the Header Bracket using the 5/8" bolt and hardware supplied.
- Lift the Stalk Stomper Assy (41944) into the Header Bracket (41942) inserting the mount pins on the Stalk Stomper Assy into the slots on the Header Bracket. Slide the Stalk Stomper Assy back in the Header Bracket ensuring the mount pins are seated in the slots.
- Insert the Bent Pin through the aligning holes in the Header Bracket and the Stalk Stomper Assy securing the Stalk Stomper Assy into position. Insert the Lynch Pin into the Bent Pin flipping the locking loop on the Lynch Pin over the end of the Bent Pin locking the pins together.

***Position references are from the combine operators position.**



120 Eastgate Drive SE
PO Box 7
Hutchinson, MN 55350

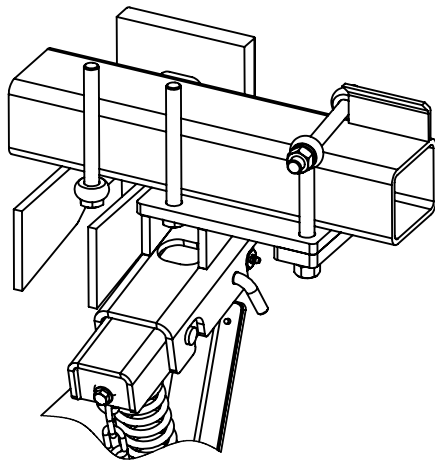
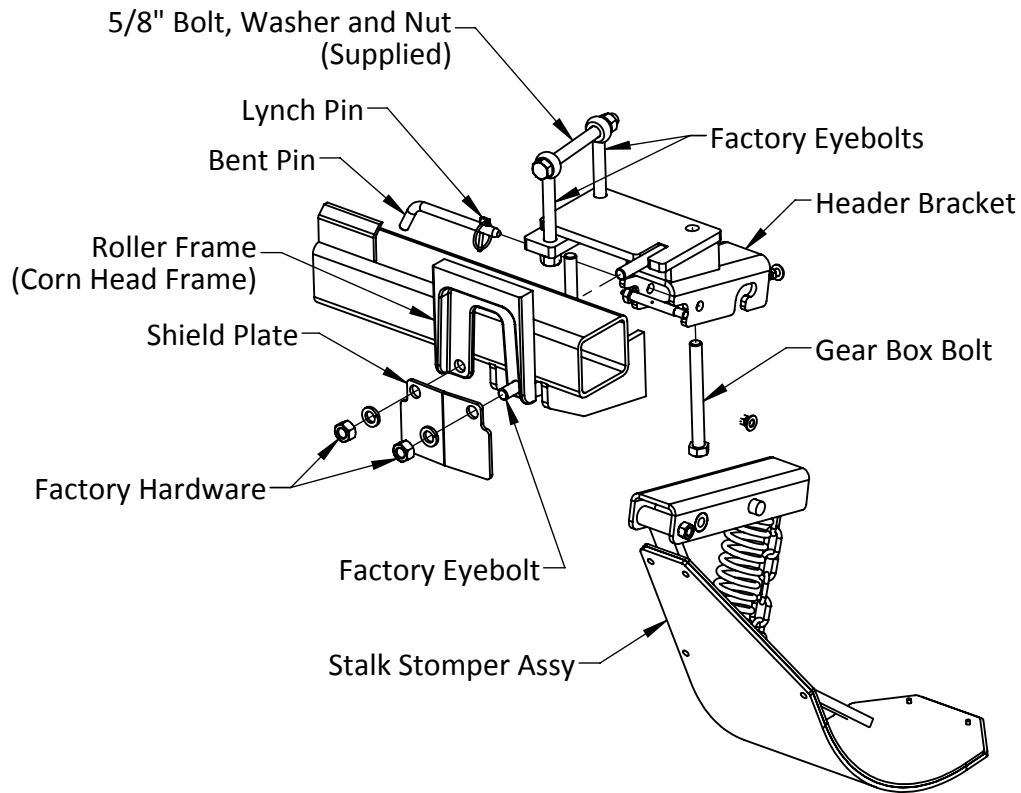
1-800-788-6483
1-320-587-2322
1-320-587-6112 (Fax)

WWW.MAYWES.COM

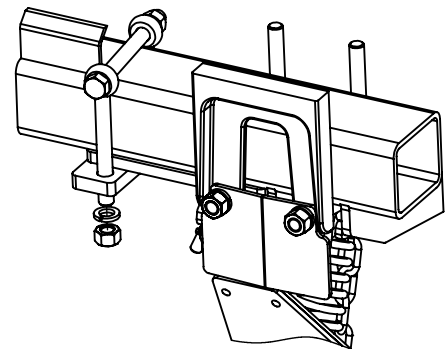
JOHN DEERE 90/40 SERIES

ROW 6 ON 8 ROW HEAD

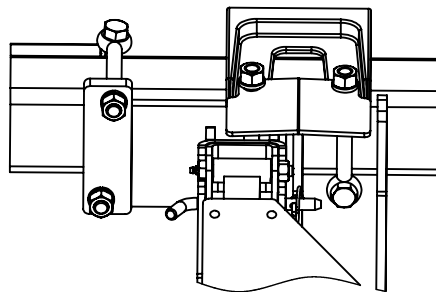
STALK STOMPER INSTALLATION



Back View



Front View



Bottom View



120 Eastgate Drive SE
 PO Box 7
 Hutchinson, MN 55350

1-800-788-6483
 1-320-587-2322
 1-320-587-6112 (Fax)

WWW.MAYWES.COM