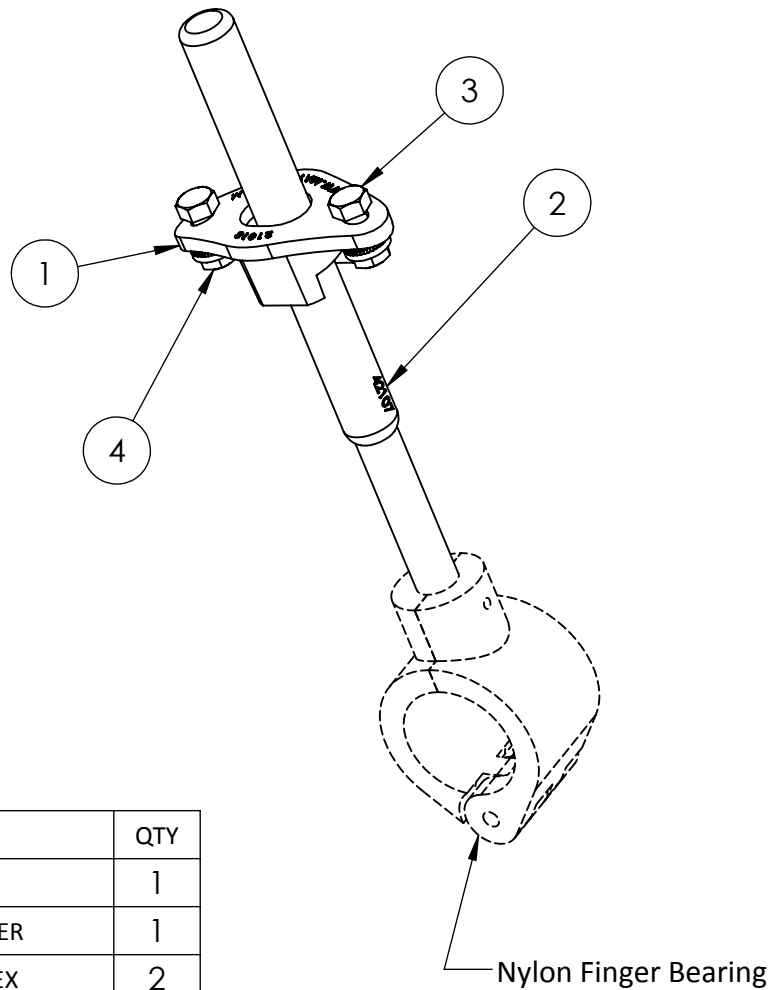


# John Deere 600 Series Draper Poly Retractable Finger Instruction Sheet

1. Remove bolt or retaining pin securing finger to bearing inside auger, remove finger.
2. Inspect the bearing for wear or damage. Repair or replace if needed.
3. Remove existing finger guide, remove any burrs from the opening in the auger skin.
4. Install finger guide on the outside of the auger skin. Secure using supplied 5/16" hardware.
5. Align poly finger with mounting hole. Install bolt or retaining pin to secure finger.

**\*\*Important Note\*\***

When finger is fully retracted, it should extend 1/2" above poly guide surface.  
Also check clearance between extended finger and auger floor before operating.



ITEM#	PART#	DESCRIPTION	QTY
1	21018	POLY FINGER GUIDE	1
2	42107	POLY RETRACTABLE FINGER	1
3	00090	BOLT, 5/16"-18 X 3/4" HEX	2
4	00714	NUT, 5/16"-18 FLANGE HEX	2



120 Eastgate Drive SE  
PO Box 7  
Hutchinson, MN 55350

1-800-788-6483  
1-320-587-2322  
1-320-587-6112 (Fax)

[WWW.MAYWES.COM](http://WWW.MAYWES.COM)