



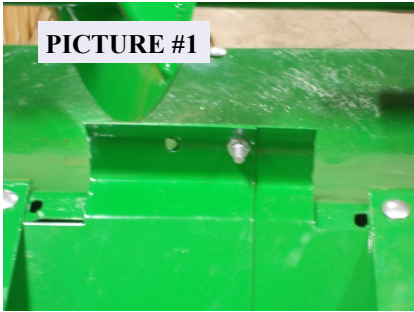
The Original Farmer Designed
59711 U.S. Hwy 12, Litchfield, MN 55355
1-888-485-8411

Assembly Instructions

GVL II

John Deere 40 OR 90 Series

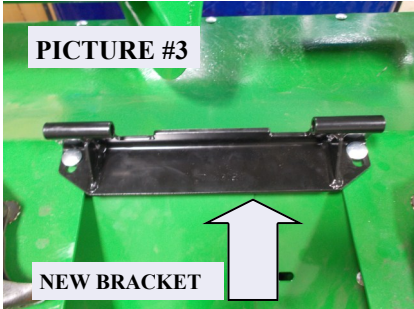
30" Center (JD 43025 or JD 93025)



PICTURE #1

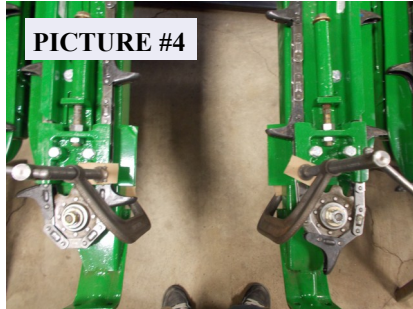


PICTURE #2

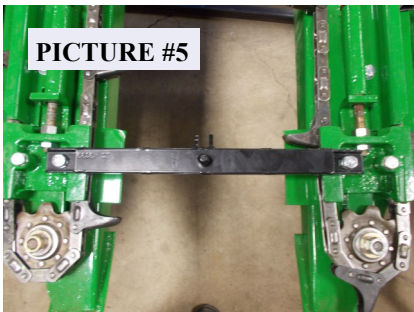


PICTURE #3

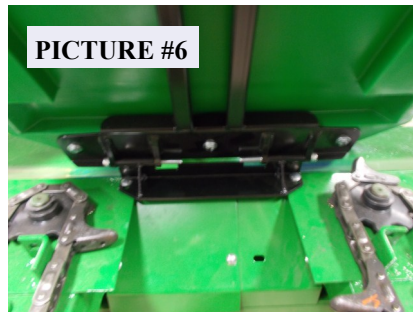
NEW BRACKET



PICTURE #4



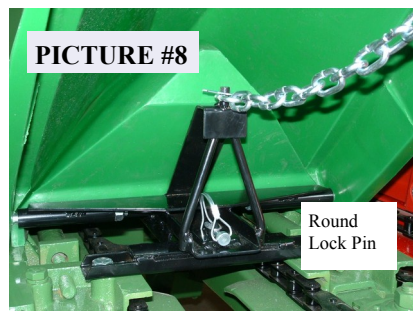
PICTURE #5



PICTURE #6



PICTURE #7



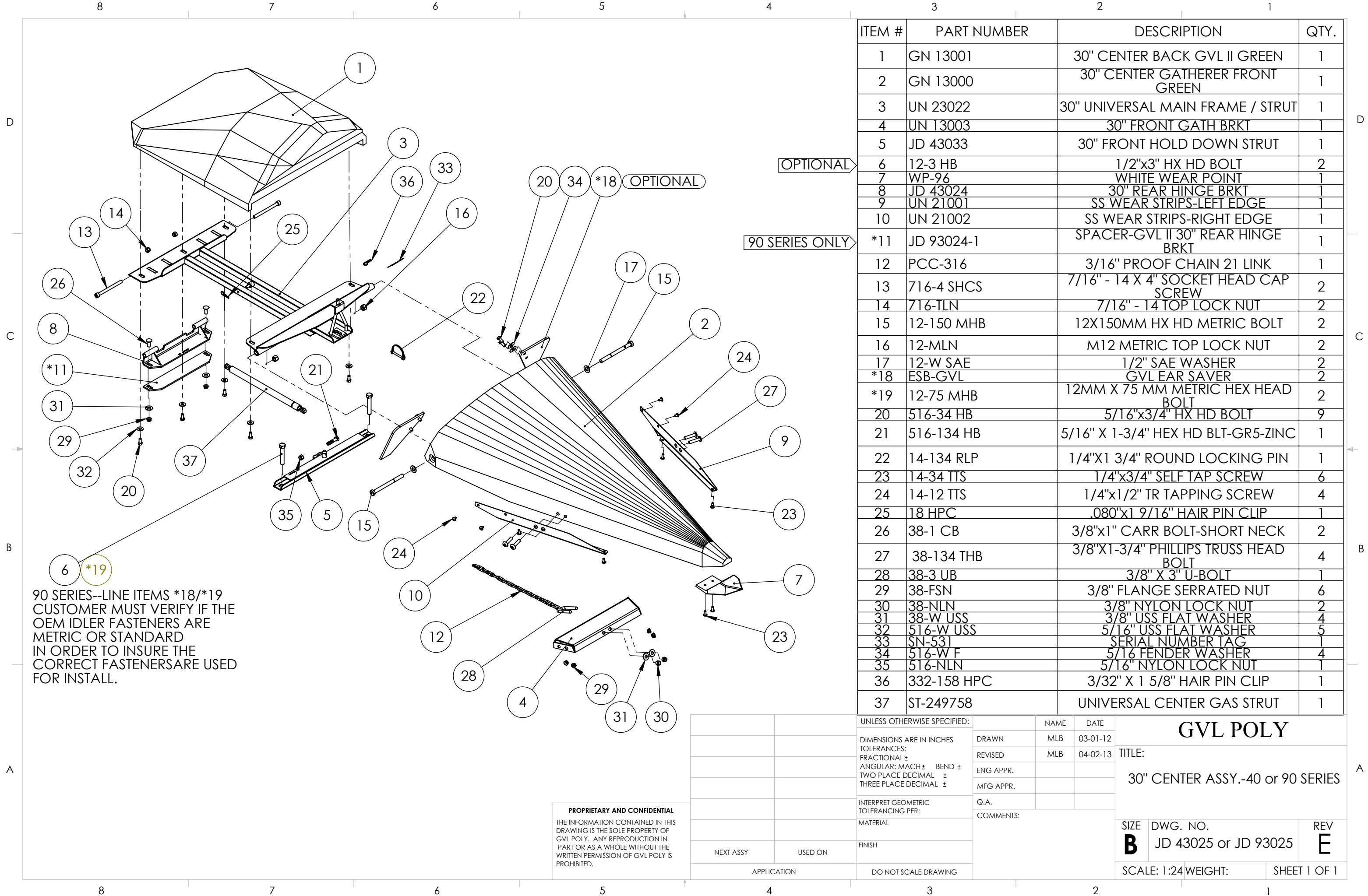
PICTURE #8

Round
Lock Pin



PICTURE #9

1. Remove old metal Gatherer. **For 90 Series Only:** Grind the John Deere hold-down pin off flush with the top the chain tightening bracket.
2. Remove old metal Gatherer. **For 40 Series Only:** Remove rear-latching bracket from head. Grind the John Deere shield off as shown in **Pictures #1 & #2.**
3. Install the **GVL** rear hinging bracket using 3/8" x 1" carriage bolts and nuts in the existing holes as shown in **Picture #3.** (Leave loose until adjustments are made in final step) (For 90 Series put spacer between rear bracket and head.)
4. Remove the inside bolts from the gatherer chain tightening bracket as shown in **Picture #4.** Use clamps to hold bracket in place.
5. Mount the front hold down bracket using the provided 1/2" x 3" hex head bolts as shown in **Picture #5.** Thread the bolts in, and tighten them.
6. Place the unit on the head and connect it to the Rear Hinge, using two 7/16" x 4" Socket Head Bolts, with 7/16" top lock nut toward the center. (**Picture #6**)
7. Place the Gas Shock rod end in the front hold down bracket. Install the bolt and nut, and tighten. Then install the shaft end of the gas shock to the unit frame with the hair pin clip provided as shown in **Picture #7.**
8. Remove the round lock pin. Lower the unit and tighten the 3/8" carriage bolts on the Rear Hinging Bracket. (**Picture #1**)
9. Lock the unit down with the round lock pin. (**Picture #8**)
10. **Tighten all bolts and nuts.**
11. Remove PVC pipe that is around the adjustment Chain as shown in **Picture #9.** (For shipping purposes only)



90 SERIES--LINE ITEMS *18/*19
 CUSTOMER MUST VERIFY IF THE
 OEM IDLER FASTENERS ARE
 METRIC OR STANDARD
 IN ORDER TO INSURE THE
 CORRECT FASTENERS ARE USED
 FOR INSTALL.

PROPRIETARY AND CONFIDENTIAL
 THE INFORMATION CONTAINED IN THIS
 DRAWING IS THE SOLE PROPERTY OF
 GVL POLY. ANY REPRODUCTION IN
 PART OR AS A WHOLE WITHOUT THE
 WRITTEN PERMISSION OF GVL POLY IS
 PROHIBITED.

ITEM #	PART NUMBER	DESCRIPTION	QTY.
1	GN 13001	30" CENTER BACK GVL II GREEN	1
2	GN 13000	30" CENTER GATHERER FRONT GREEN	1
3	UN 23022	30" UNIVERSAL MAIN FRAME / STRUT	1
4	UN 13003	30" FRONT GATH BRKT	1
5	JD 43033	30" FRONT HOLD DOWN STRUT	1
6	12-3 HB	1/2"x3" HX HD BOLT	2
7	WP-96	WHITE WEAR POINT	1
8	JD 43024	30" REAR HINGE BRKT	1
9	UN 21001	SS WEAR STRIPS-LEFT EDGE	1
10	UN 21002	SS WEAR STRIPS-RIGHT EDGE	1
*11	JD 93024-1	SPACER-GVL II 30" REAR HINGE BRKT	1
12	PCC-316	3/16" PROOF CHAIN 21 LINK	1
13	716-4 SHCS	7/16" - 14 X 4" SOCKET HEAD CAP SCREW	2
14	716-TLN	7/16" - 14 TOP LOCK NUT	2
15	12-150 MHB	12X150MM HX HD METRIC BOLT	2
16	12-MLN	M12 METRIC TOP LOCK NUT	2
17	12-W SAE	1/2" SAE WASHER	2
*18	ESB-GVL	GVL EAR SAVER	2
*19	12-75 MHB	12MM X 75 MM METRIC HEX HEAD BOLT	2
20	516-34 HB	5/16"x3/4" HX HD BOLT	9
21	516-134 HB	5/16" X 1-3/4" HEX HD BLT-GR5-ZINC	1
22	14-134 RLP	1/4"X1 3/4" ROUND LOCKING PIN	1
23	14-34 TTS	1/4"x3/4" SELF TAP SCREW	6
24	14-12 TTS	1/4"x1/2" TR TAPPING SCREW	4
25	18 HPC	.080"x1 9/16" HAIR PIN CLIP	1
26	38-1 CB	3/8"x1" CARR BOLT-SHORT NECK	2
27	38-134 THB	3/8"X1-3/4" PHILLIPS TRUSS HEAD BOLT	4
28	38-3 UB	3/8" X 3" U-BOLT	1
29	38-FSN	3/8" FLANGE SERRATED NUT	6
30	38-NLN	3/8" NYLON LOCK NUT	2
31	38-W USS	3/8" USS FLAT WASHER	4
32	516-W USS	5/16" USS FLAT WASHER	5
33	SN-531	SERIAL NUMBER TAG	1
34	516-W F	5/16" FENDER WASHER	4
35	516-NLN	5/16" NYLON LOCK NUT	1
36	332-158 HPC	3/32" X 1 5/8" HAIR PIN CLIP	1
37	ST-249758	UNIVERSAL CENTER GAS STRUT	1

UNLESS OTHERWISE SPECIFIED:		NAME	DATE	GVL POLY	
DIMENSIONS ARE IN INCHES		DRAWN	MLB		TITLE: 30" CENTER ASSY.-40 or 90 SERIES
TOLERANCES:		REVISED	MLB		
FRACTIONAL ±		ENG APPR.			
ANGULAR: MACH ± BEND ±		MFG APPR.			
TWO PLACE DECIMAL ±		Q.A.			
THREE PLACE DECIMAL ±		COMMENTS:			
INTERPRET GEOMETRIC TOLERANCING PER:				SIZE	
MATERIAL				DWG. NO.	
FINISH				REV	
NEXT ASSY	USED ON			B JD 43025 or JD 93025 E	
APPLICATION		DO NOT SCALE DRAWING		SCALE: 1:24 WEIGHT: SHEET 1 OF 1	